

UC Department of Emergency Medicine Physicians



W. Brian Gibler, MD, FAHA

**Richard C. Levy Professor of Emergency Medicine and
Chairman, UC Department of Emergency Medicine
Director, University Hospital Center for Emergency Care**

Residency – Emergency Medicine, University of
Cincinnati, Cincinnati, Ohio
MD – Vanderbilt University, Nashville, Tennessee
BS – Brown University, Providence, Rhode Island



Rhonda S. Cadena, MD, MS

**Assistant Professor of Emergency Medicine
Fellow, Neurovascular Emergencies & Neurocritical
Care
Member, Greater Cincinnati-Northern KY Stroke
Team**

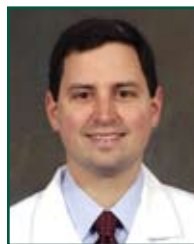
Residency – Emergency Medicine, University of
Cincinnati, Cincinnati, Ohio
MD – Southern Illinois University, Springfield, Illinois
MS – Southern Illinois University, Carbondale, Illinois
BS – Southern Illinois University, Carbondale, Illinois



Opeolu M. Adeoye, MD

**Assistant Professor of Emergency Medicine
Member, Greater Cincinnati-Northern KY Stroke
Team**

Fellowship – Neurovascular Emergencies & Neurocritical
Care, University of Cincinnati
Residency – Emergency Medicine, University of
Cincinnati, Cincinnati, Ohio
MD – University of Pittsburgh, Pittsburgh, Pennsylvania
BS – University of Maryland, Baltimore, Maryland



John W. Campbell III, MD

**Assistant Professor of Emergency Medicine
Director 4th Year Medical Student Education, UC
Department of Emergency Medicine**

Residency – Emergency Medicine, University of
Cincinnati, Cincinnati, Ohio
MD – Boston University, Boston, Massachusetts
BS – Xavier University, Cincinnati, Ohio



M. Stephen Baxter, MD

Assistant Professor of Emergency Medicine

Residency – Emergency Medicine, University of
Cincinnati, Cincinnati, Ohio
MD – University of Cincinnati, Cincinnati, Ohio
BS – Ohio State University, Columbus, Ohio



Steven C. Carleton, MD, PhD

**Associate Professor of Emergency Medicine and
Director, EM Ultrasound Education
Director, Third Year Medical Student Education,
UC Department of Emergency Medicine**

Residency – Emergency Medicine, University of
Cincinnati, Cincinnati, Ohio
MD – University of Cincinnati, Cincinnati, Ohio
PhD – Anatomy, Uniformed Services University of the
Health Sciences, Bethesda, Maryland
BA – Kenyon College, Gambier, Ohio



Andra L. Blomkalns, MD

**Associate Professor of Emergency Medicine and
Vice Chairman – Academic Affairs**

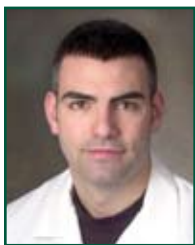
Residency – Emergency Medicine, University of
Cincinnati, Cincinnati, Ohio
MD – Louisiana State University, Shreveport, Louisiana
BS – Rice University, Houston, Texas



Sean P. Collins, MD, MSc

Assistant Professor of Emergency Medicine

Residency – Emergency Medicine, University of
Cincinnati, Cincinnati, Ohio
MD – University of Wisconsin, Madison, Wisconsin
MSc – Harvard School of Public Health, Boston,
Massachusetts
BS – Boston University, Boston, Massachusetts



Jordan B. Bonomo, MD

**Instructor of Clinical Emergency Medicine
Member, Greater Cincinnati-Northern KY Stroke
Team**

Fellowship – Neurovascular Emergencies & Neurocritical
Care, University of Cincinnati
Residency – Emergency Medicine, University of
Cincinnati, Cincinnati, Ohio
MD – Brown University, Providence, Rhode Island
BA – Brown University, Providence, Rhode Island



John M. Deledda, MD

**Assistant Professor of Emergency Medicine
Medical Director, University Hospital Center for
Emergency Care
Chief of Staff - Elect, University Hospital**

Residency – Emergency Medicine, University of
Cincinnati, Cincinnati, Ohio
MD – University of Michigan, Ann Arbor, Michigan
BS – University of Michigan, Ann Arbor, Michigan



Gregory J. Fermann, MD

Associate Professor of Emergency Medicine and Vice Chairman - Strategic Planning

Residency – Emergency Medicine, Maricopa Medical Center, Phoenix, Arizona
MD – University of Cincinnati, Cincinnati, Ohio
BA – St. Louis University, St. Louis, Missouri



William R. Hinckley, MD

**Assistant Professor of Emergency Medicine
Medical Director, University Air Care**

Residency – Emergency Medicine, University of Cincinnati, Cincinnati, Ohio
MD – Indiana University School of Medicine, Indianapolis, Indiana
BA – Indiana University, Bloomington, Indiana



J. Gregory Frappier, DO

Assistant Professor of Emergency Medicine

Residency – Emergency Medicine, Brentwood Hospital, Cleveland, Ohio
DO – College of Osteopathic Medicine of the Pacific, Pomona, California
BS – Alma College, Flint, Michigan



Carolyn K. Holland, MD, MEd

**Assistant Professor of Emergency Medicine
Fellow, Cincinnati Children's Hospital Medical Center**

Residency – Emergency Medicine, University of Cincinnati, Cincinnati, Ohio
MD – Eastern Virginia Medical School, Norfolk, Virginia
MEd – University of Florida, Gainesville, Florida
BS – University of Florida, Gainesville, Florida



Erin M. Grise, MD

**Instructor of Clinical Emergency Medicine
Fellow, Neurovascular Emergencies & Neurocritical Care
Member, Greater Cincinnati-Northern KY Stroke Team**

Residency – Emergency Medicine, University of Cincinnati, Cincinnati, Ohio
MD – Feinberg SOM-Northwestern University, Chicago, Illinois
BS – Miami University, Oxford, Ohio



Kevin J. Joseph, MD

**Assistant Professor of Emergency Medicine
Emergency Medicine Trauma Liaison, University Hospital
Director, EM Mid-Level Provider Program
Medical Director, West Chester Emergency Department**

Residency – Emergency Medicine, University of Cincinnati, Cincinnati, Ohio
MD – Vanderbilt University School of Medicine, Nashville, Tennessee
BS – Johns Hopkins University, Baltimore, Maryland



Amy R. Gutman, MD

**Assistant Professor of Emergency Medicine
Associate Director, Mid-Level Provider Program**

Fellowship - Emergency Medical Services, University of Cincinnati, Cincinnati, Ohio
Residency – Emergency Medicine, Louisiana State University, Shreveport, Louisiana
Internship – General Surgery, Bassett Healthcare, Cooperstown, New York
MD – Saba University School of Medicine, Saba, Netherlands-Antille
BS – King's College, Wilkes-Barre, Pennsylvania
BA – Albion College, Albion, Michigan



William A. Knight IV, MD

**Assistant Professor of Emergency Medicine
Member, Greater Cincinnati-Northern KY Stroke Team**

Fellowship, Neurovascular Emergencies & Neurocritical Care, University of Cincinnati, Cincinnati, Ohio
Residency – Emergency Medicine, University of Cincinnati, Cincinnati, Ohio
MD – University of Cincinnati, Cincinnati, Ohio
BS – University of Dayton, Dayton, Ohio



Laura E. Heitsch, MD

**Assistant Professor of Emergency Medicine
Fellow, Neurovascular Emergencies
Member, Greater Cincinnati-Northern KY Stroke Team**

Residency – Emergency Medicine, University of Cincinnati, Cincinnati, Ohio
MD – University of Illinois, Chicago, Illinois
BS – University of Illinois,ampaign, Illinois



Douglas C. Krejsa, MD

**Assistant Professor of Emergency Medicine
Associate Medical Director, West Chester Emergency Department**

Residency – Emergency Medicine, Metro Health Medical Center, Cleveland, Ohio
MD – Case Western Reserve, Cleveland, Ohio
BA – University of Michigan, Ann Arbor, Michigan



Sabrina D. Leach, MD

Assistant Professor of Emergency Medicine

Residency – Emergency Medicine, University of Cincinnati, Cincinnati, Ohio
MD – University of Cincinnati, Cincinnati, Ohio
BS – Ohio University, Athens, Ohio



Elizabeth E. Leenellett, MD

**Assistant Professor of Emergency Medicine
Associate Medical Director and Director, Resident
Education, West Chester Emergency Department**

Residency – Emergency Medicine, University of Cincinnati, Cincinnati, Ohio
MD – University of Michigan, Ann Arbor, Michigan
BS – University of Michigan, Ann Arbor, Michigan



Joseph J. Moellman, MD

**Associate Professor of Emergency Medicine
Associate Medical Director, Jewish Hospital
Emergency Department**

Residency – Emergency Medicine, University of Cincinnati, Cincinnati, Ohio
MD – University of Cincinnati, Cincinnati, Ohio
BS – Xavier University, Cincinnati, Ohio



Richard C. Levy, MD, MPH

Professor of Emergency Medicine

Residency – Emergency Medicine, University of Cincinnati, Cincinnati, Ohio
MD – University of Louisville, Louisville, Kentucky
MPH – Harvard University School of Public Health, Boston, Massachusetts
BA – University of Kentucky, Lexington, Kentucky



William J. Naber, MD

Assistant Professor of Emergency Medicine

Residency – Emergency Medicine, Geisinger Medical Center, Danville, Pennsylvania
MD – University of Cincinnati, Cincinnati, Ohio
BS – University of Dayton, Dayton, Ohio



Donald A. Locasto, MD

**Assistant Professor of Emergency Medicine
Director, Special Operations Institute**

Residency – Combined Emergency Medicine/Internal Medicine, Allegheny General Hospital, Pittsburgh, Pennsylvania
MD – University of Medicine and Dentistry of New Jersey, Piscataway, New Jersey
BS – Rutgers University, Newark, New Jersey



Edward J. Otten, MD, FACMT

**Professor of Emergency Medicine
Director, Division of Toxicology**

Residency – Emergency Medicine, University of Cincinnati, Cincinnati, Ohio
MD – University of Cincinnati, Cincinnati, Ohio
BA – Kenyon College, Gambier, Ohio



Michael S. Lyons, MD

**Assistant Professor of Emergency Medicine
Director, Early Intervention HIV Program**

Residency – Emergency Medicine, University of Cincinnati, Cincinnati, Ohio
MD – Duke University, Durham, North Carolina
BA – Northwestern University, Evanston, Illinois



Arthur M. Pancioli, MD

**Professor of Emergency Medicine and Executive Vice
Chairman
Member, Greater Cincinnati-Northern KY Stroke Team**

Residency – Emergency Medicine, University of Cincinnati, Cincinnati, Ohio
MD – University of Michigan, Ann Arbor, Michigan
BS – University of Michigan, Ann Arbor, Michigan



Jason T. McMullan, MD

Assistant Professor of Emergency Medicine

Fellowship – Emergency Medical Services, University of Cincinnati, Cincinnati, Ohio
Residency – Emergency Medicine, University of Cincinnati, Cincinnati, Ohio
MD – Medical University of South Carolina, Charleston, South Carolina
BA – Davidson College, Davidson, North Carolina



Marcus G. Romanello, MD

Assistant Professor of Emergency Medicine

Residency – Emergency Medicine, University of Alabama, Birmingham, Alabama
MD – University of Cincinnati, Cincinnati, Ohio
BA – Miami University, Oxford, Ohio



Christopher N. Miller, MD, MS

**Assistant Professor of Emergency Medicine
Director of Simulation Medicine**

Residency – Emergency Medicine, University of Cincinnati, Cincinnati, Ohio
Internship – Naval Medical Center, Portsmouth, Virginia
MD – University of Kentucky, Lexington, Kentucky
MS – University of Kentucky, Lexington, Kentucky
BS – University of Kentucky, Lexington, Kentucky



Sarah E. Ronan-Bentle, MD, MS

**Assistant Professor of Emergency Medicine and
Associate Residency Director, UC Department of
Emergency Medicine**

Residency – Emergency Medicine, University of Cincinnati, Cincinnati, Ohio
MD – University of Cincinnati, Cincinnati, Ohio
MS – St. Louis University, St. Louis, Missouri
BS – St. Louis University, St. Louis, Missouri



Richard J. Ryan, MD

**Associate Professor of Emergency Medicine and Vice
Chairman - Practice Management
Medical Director, Jewish Hospital Emergency Department
Past President, Jewish Hospital Medical Staff**

Residency – Emergency Medicine, University of Cincinnati, Cincinnati, Ohio
MD – New York Medical College, Valhalla, New York
BS – Boston College, Chestnut Hill, Massachusetts



Lisa L. Willacker, MD

Assistant Professor of Emergency Medicine

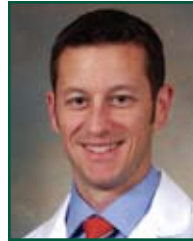
Residency – Emergency Medicine, University of Cincinnati, Cincinnati, Ohio
MD – University of Cincinnati, Cincinnati, Ohio
BS – Northern Kentucky University, Highland Heights, Kentucky



George J. Shaw, III, MD, PhD

Assistant Professor of Emergency Medicine

Residency – Emergency Medicine, University of Cincinnati, Cincinnati, Ohio
MD – Georgetown University, Washington, DC
PhD – Physics, University of Maryland, College Park, Maryland
BA – University of Virginia, Charlottesville, Virginia



Michael J. Willing, MD, MBA

**Assistant Professor of Emergency Medicine
Associate Medical Director, Jewish Hospital
Emergency Department**

Residency – Emergency Medicine, University of Cincinnati, Cincinnati, Ohio
MD – St. Louis University, St. Louis, Missouri
MBA – University of Cincinnati, Cincinnati, Ohio
BS – St. Louis University, St. Louis, Missouri



Brian A. Stettler, MD

**Assistant Professor of Emergency Medicine and
Residency Program Director, UC Department of
Emergency Medicine
Member, Greater Cincinnati-Northern KY Stroke Team**

Emergency Neurovascular Fellowship, University of Cincinnati, Cincinnati, Ohio
Residency – Emergency Medicine, University of Cincinnati, Cincinnati, Ohio
MD – Ohio State University College of Medicine, Columbus, Ohio
BS – Ohio State University, Columbus, Ohio



Stewart W. Wright, MD, MEd

**Associate Professor of Emergency Medicine
Director, Emergency Medicine Committee for
Procedural Quality and Evidence-based Practice**

Residency – Emergency Medicine, University of Cincinnati, Cincinnati, Ohio
MD – Washington University, St. Louis, Missouri
MEd – University of Cincinnati, Cincinnati, Ohio
BS – University of Illinois, Champaign, Illinois



Alexander T. Trott, MD

Professor of Emergency Medicine

Residency – Emergency Medicine, University of Cincinnati, Cincinnati, Ohio
MD – University of Cincinnati, Cincinnati, Ohio
BA – Denver University, Denver, Colorado



Jonathan W. Van Zile, MD

**Assistant Professor of Emergency Medicine
Medical Director, Health Alliance Mobile Care
Director, Resident Education, Jewish Hospital
Emergency Department**

Residency – Emergency Medicine, St. Vincent’s Hospital, Toledo, Ohio
Residency - Internal Medicine, University of Wisconsin, Madison, Wisconsin
MD – Medical University of South Carolina, Charleston, South Carolina
BS – University of South Carolina, Columbia, South Carolina



Arthur A. Wall III, MD

**Assistant Professor of Emergency Medicine
Co-Director, New Technologies**

Residency – Combined Emergency Medicine/Internal Medicine, Wayne State University, Detroit, Michigan
MD – University of Cincinnati, Cincinnati, Ohio
BS – Ohio Wesleyan University, Delaware, Ohio